

*From the Desk of:*

**Lesley Slepian**  
SAGE Pro ERP  
Practice Manager

Email:  
[lslepian@netatwork.com](mailto:lslepian@netatwork.com)

Direct Line:  
646-293-1744

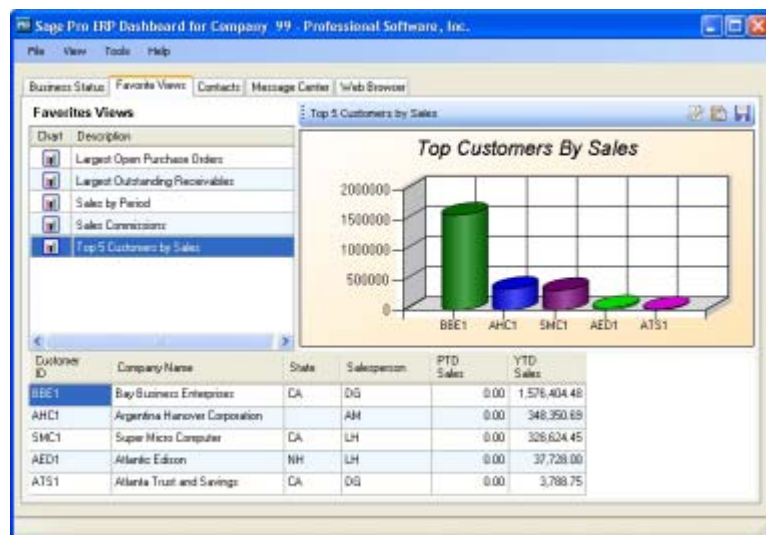
**In the Next Edition of Pro Tips:**  
*What's New in Pro 7.5?*

**SAGE Pro ERP 200 : Tip #8****The Dashboard**

The Sage Pro 200 Dashboard provides a powerful executive tool, offering business insights via data views, charting, customer and vendor listings and a web browser. A remote access version of the Dashboard installs as a thin client and can be run over the internet, giving exceptional reporting capabilities to managers and owners in a dynamic way.

**How the feature works:**

To get started, launch the Dashboard from a separate program icon on your toolbar and use your discrete login. The tabular menu allows you to view a web view of your business status report, view detailed customer and vendor information, use the Customer Connect remote Sales Order application (if purchased), and view your own (configurable) Favorite Charts:

**How the feature is used:**

From the tabular Dashboard menu, select Business Status, Favorite Views, Contacts, Message Center or Web Browser. The Favorite Views tab displays and optionally charts selected data views from Sage Pro ERP if you have the proper privileges. The Chart Configuration dialog allows users to create new charts or modify existing charts for Dashboard Favorite Views. It allows you to peg charting information against several visual chart styles and easily create Views.

The Customer Connect module can be added to allow users to enter Sales Orders remotely, as well as to adopt many additional user

## ACCPAC User Tips

*Continued...*

defined tools on every customer and order.

**The Opportunity:**

Business owners and managers can get key financial and business data from their ERP system without the burden of sophisticated web products or reporting. Speak to your consultant if you are not sure if the installation steps have been performed as they are separate from your core financial system. Then, enjoy the access to important tools and views from any web connection! Remember, the Dashboard does access one user license, so you must still have enough licenses to logon.

The Sage Pro ERP Dashboard brings the power of web to your ERP system!

If you would like to learn more please call me at 646-293-1744 or contact me via email: [lslepian@netatwork.com](mailto:lslepian@netatwork.com).

A handwritten signature in black ink that reads "Lesley Sly". The signature is written in a cursive style with a long horizontal stroke at the end.