

# New Features Summary

Version 11  
February 2017

**sage** X3

**Net** @ **Work**



## ≡ Introduction

- 1 Most important new features and improvements
- 2 New integrations
- 3 Other functional improvements
- 4 New complementary solutions
- 5 Availability

# A better way to manage the entire business, at a lower cost and on a global scale



**Financial  
Management**



**Supply Chain  
Management**



**Production  
Management**



**Cloud  
and Mobile**

## Key Benefits

**Faster** process cycle time, faster inventory turns, faster customer response time, faster insights into costs and performance.

**Simpler** management of distributed operations and simpler IT management.

**Flexible** capacity, customization, configuration and deployment options, in the cloud or on premises.



# Sage Enterprise Solutions

## Introduction

- 1 Important new features and improvements
- 2 New integrations
- 3 Other functional improvements
- 4 New complementary solutions
- 5 Availability

### SAGE ENTERPRISE SOLUTIONS

#### SAGE X3



#### Financial Management

##### CORE APPLICATIONS

Budgets & Accounting

Fixed Assets

Financial Reporting

Dashboards

##### INTEGRATED APPLICATIONS

Business Intelligence



#### Supply Chain Management

##### CORE APPLICATIONS

Purchasing

Inventory Management

Sales Management

Customer Service

##### INTEGRATED APPLICATIONS

E-commerce

SalesForce CRM Connector

Warehousing & Logistics



#### Production Management

##### CORE APPLICATIONS

BOM Planning

Shop Floor Control

Quality Control

Project Management

##### INTEGRATED APPLICATIONS

Production Scheduling



#### People Management

##### CORE APPLICATIONS

Payroll

##### INTEGRATED APPLICATIONS

Workforce Management

Talent Acquisition

Talent Management

HR Planning

Data warehouse and multi-source data management and analytics

Cloud



Mobile



Windows 10

# Important new features and improvements

## Introduction

### 1 Important new features and improvements

### 2 New integrations

### 3 Other functional improvements

### 4 New complementary solutions

### 5 Availability

## New in Production Management Project Management

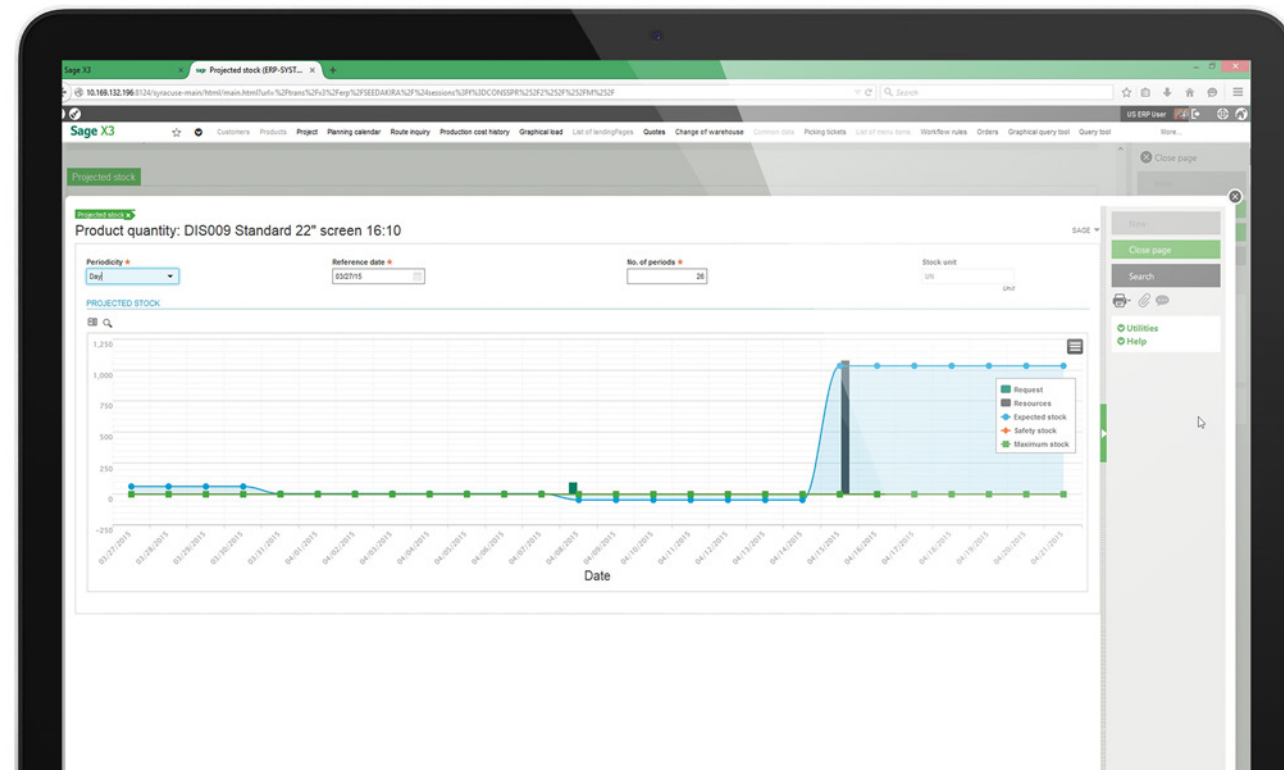
Manage all aspects of a project across financial, distribution and/or manufacturing processes, from quoting to planning resources and material, tracking costs and schedule, invoicing and analyzing profits.

## New in Production Management Production Scheduler

Optimize production cycles and control lead times with more flexible graphical production planning and scheduling capabilities.

## New in Production Management Automated Bank Statements

Improve the efficiency of the financial process by automatically generating the transactions matching open items or unbalanced operations when importing bank statements (MT940).



# New integrations

## Introduction

### 1 Important new features and improvements

### 2 New integrations

### 3 Other functional improvements

### 4 New complementary solutions

### 5 Availability

## New in Supply Chain Management E-commerce

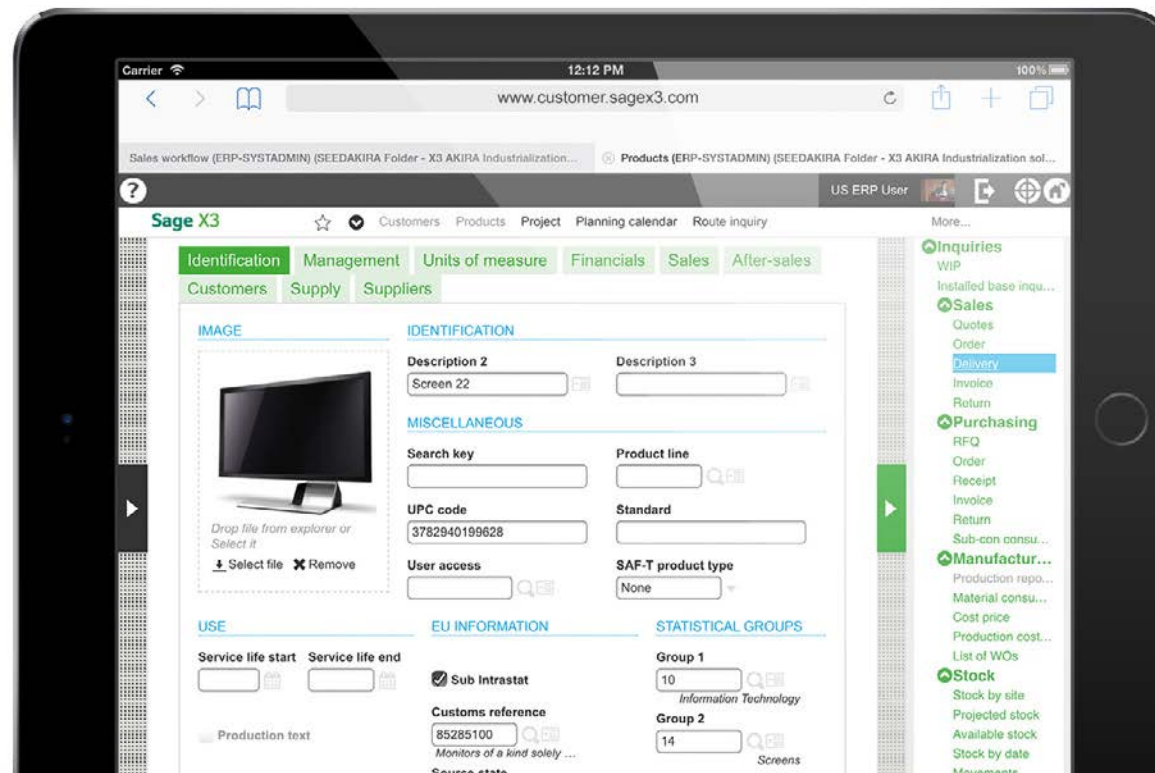
Build or customize a comprehensive webstore within days, and manage catalogs, pricing, inventory, customers, and all transactions as part of the Sage X3 core supply chain management processes.

## New in Supply Chain Management CRM

Synchronize customer records between Salesforce CRM and Sage X3, and display customer orders in Salesforce using the new Sage X3 Salesforce CRM Connector.

## New in Financial Management Financial Reporting

Easily design reports, with intuitive Excel-based reporting capabilities integrated with Sage X3 financial management, and automate the running and distribution of reports to teams or individuals.





# Other functional improvements

## Introduction

### 1 Important new features and improvements

### 2 New integrations

### 3 Other functional improvements

### 4 New complementary solutions

### 5 Availability

## Supply Chain Management

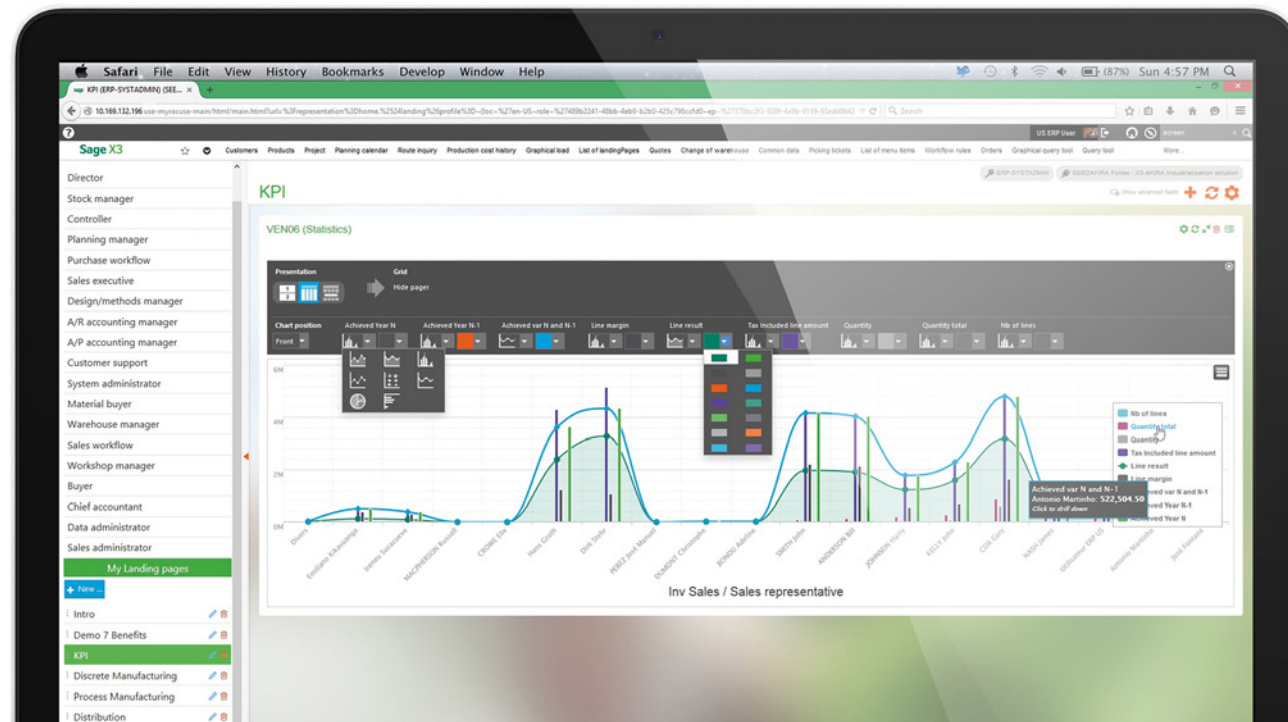
- Optimize container capacity for shipments.
- Attach & track documents associated with receiving goods.
- Easily customize steps to track during receiving process.
- Easily update costs associated with purchasing on shipment and view shipment cost totals.
- Create complementary invoice from shipments.

## Production Management

- Enable shop floor tracking by team, available in ADC.

## Financial Management

- Accelerate closing with real-time inter-company consolidation process, at the right level of aggregation.
- Accelerate currency conversion by running conversions in one run, at the balance sheet level (vs. transaction level).
- Fast entry booking: accelerate journal and AP/AR entries.
- Automate reminder campaigns based on amounts or intervals.
- Enable blocking sales transactions based on credit rating.
- Compliance updates for AU, DE, PL, PT, ZA, ES, FR, CH.



# New complementary solutions

## Introduction

### 1 Important new features and improvements

### 2 New integrations

### 3 Other functional improvements

### 4 New complementary solutions

### 5 Availability

## Supply Chain Management Sage Geode v11

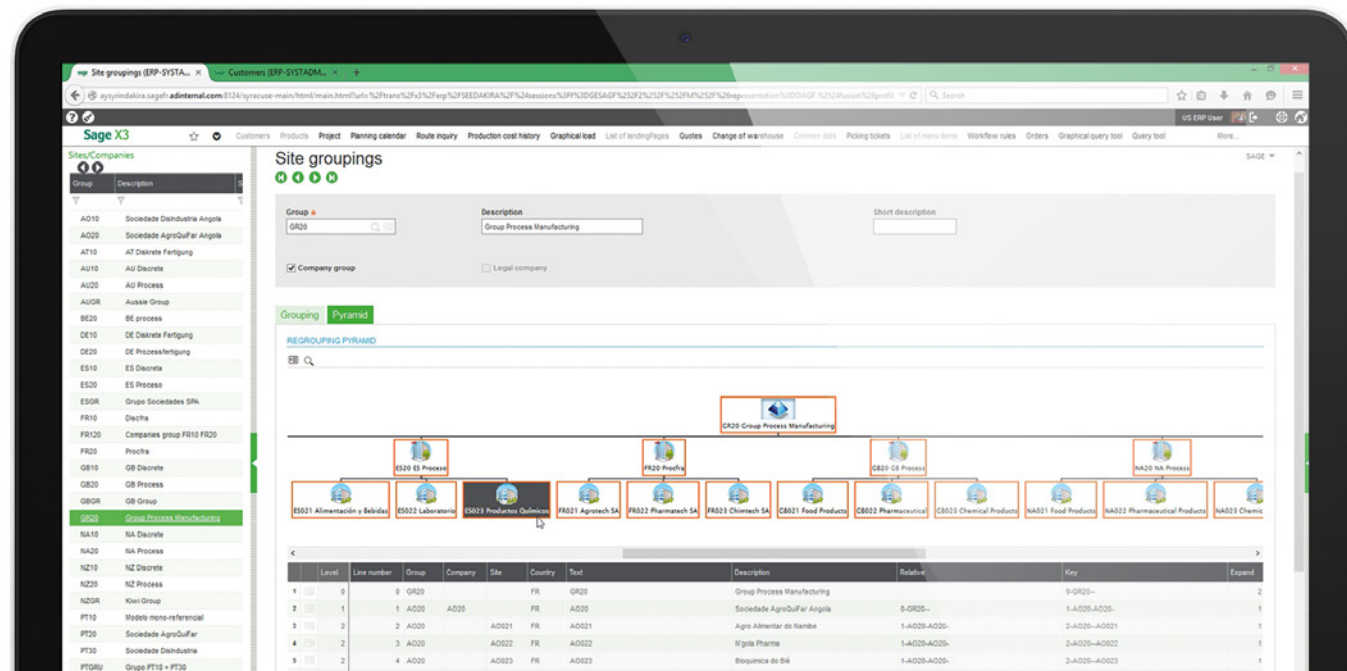
Extend Sage X3 with best-in-class warehouse management capabilities from Sage Geode to optimize all physical flows in the warehouse, from receipts to shipments.

## Analytics | Sage X3 Data Management and Analytics

Integrate, migrate and manage data across platforms, and get consistent insights from multiple sources. Sage X3 Data Management provides users with a powerful data warehouse for managing information from any source effectively, and offers built-in data models to simplify data migration and reporting.

## Industry solutions Sage X3 Construction

Extend the core Sage X3 capabilities for financial and supply chain management, with a cohesive solution to manage all of construction and real estate business processes – including project management, contract management, estimating, timesheet transactions, sub-contracting, project financial tracking and cash flow.



# Availability

## Introduction

### 1 Important new features and improvements

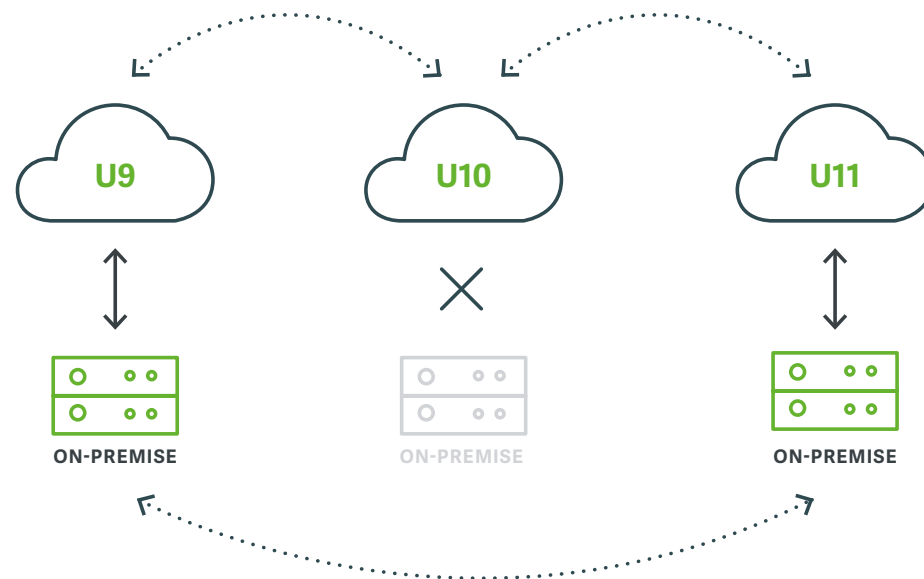
### 2 New integrations

### 3 Other functional improvements

### 4 New complementary solutions

### 5 Availability

Sage X3 version 11 is available to customers in the cloud or on-premises. All features introduced in previous cloud-only releases (update 10.x) are now also available to customers on-premises with Sage X3 version 11. See Product Update 10 release guide for details on the previous release.







### About Net@Work

Founded in 1996, Net@Work is an award winning and top Sage business partner providing unmatched consulting, implementation and development services for Sage X3 and the entire Sage solutions portfolio.

Their industry leading Sage X3 team consists of a highly trained, experienced group that include solution architects, project managers, developers, technical and business consultants.

Specialists in integrations and custom development, Net@Work also offers an extended set of comprehensive solutions including Salesforce, Magento, Office 365, and Cloud Services.

Learn more about Net@Work's Sage X3 team, methodology and experience:

[netatwork.com/SageX3](https://netatwork.com/SageX3)

Net@Work

[netatwork.com/SageX3](https://netatwork.com/SageX3) | 1.800.719.3307

